

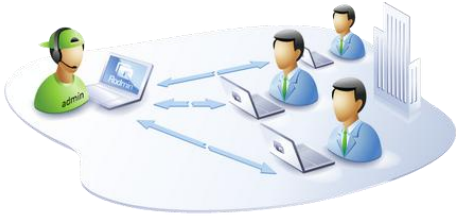


**Radmin is a sophisticated and efficient solution for optimizing corporate business processes.**

**Eugene Lisovskiy**  
Marketing Director

With Radmin you can:

Administer network computers



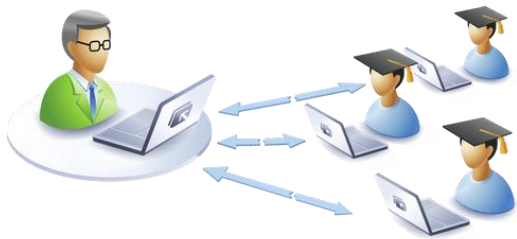
Work remotely



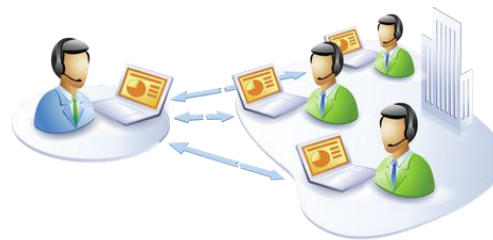
Provide help desk services



Provide remote training



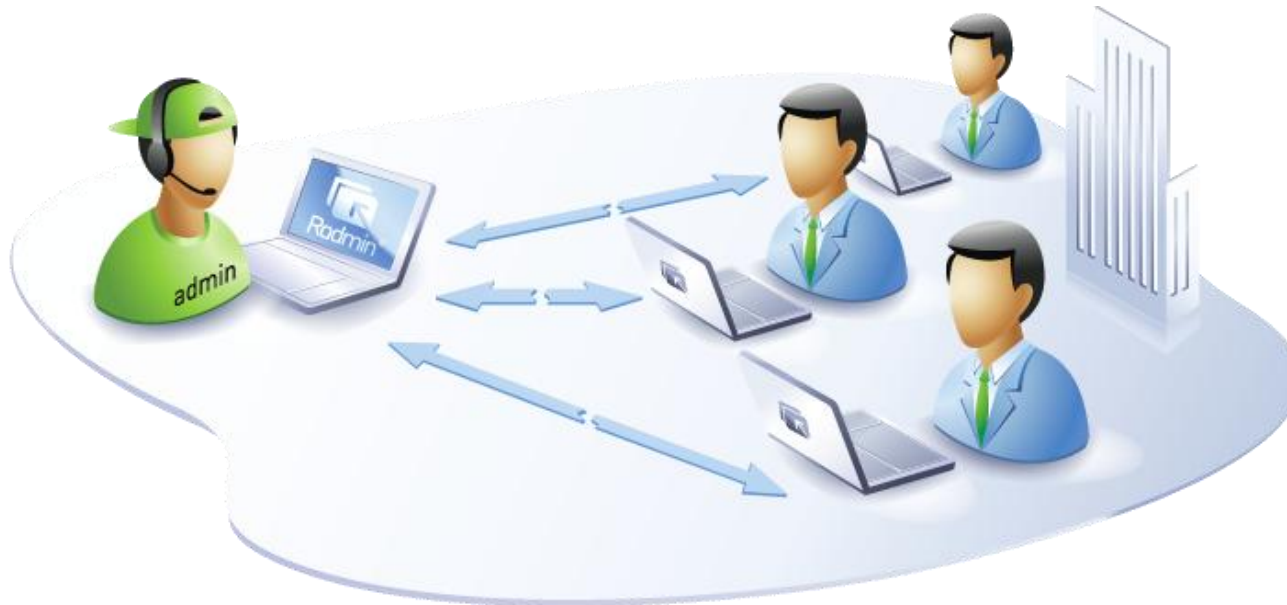
Organize online conferences



Create remote offices

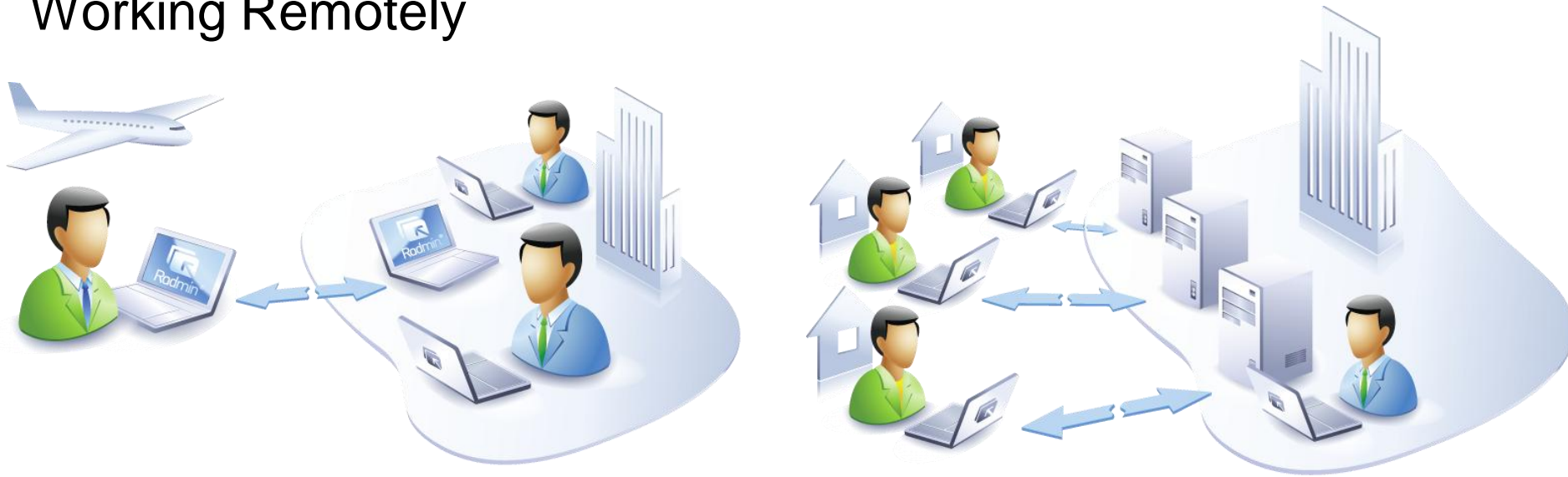


## System Administration



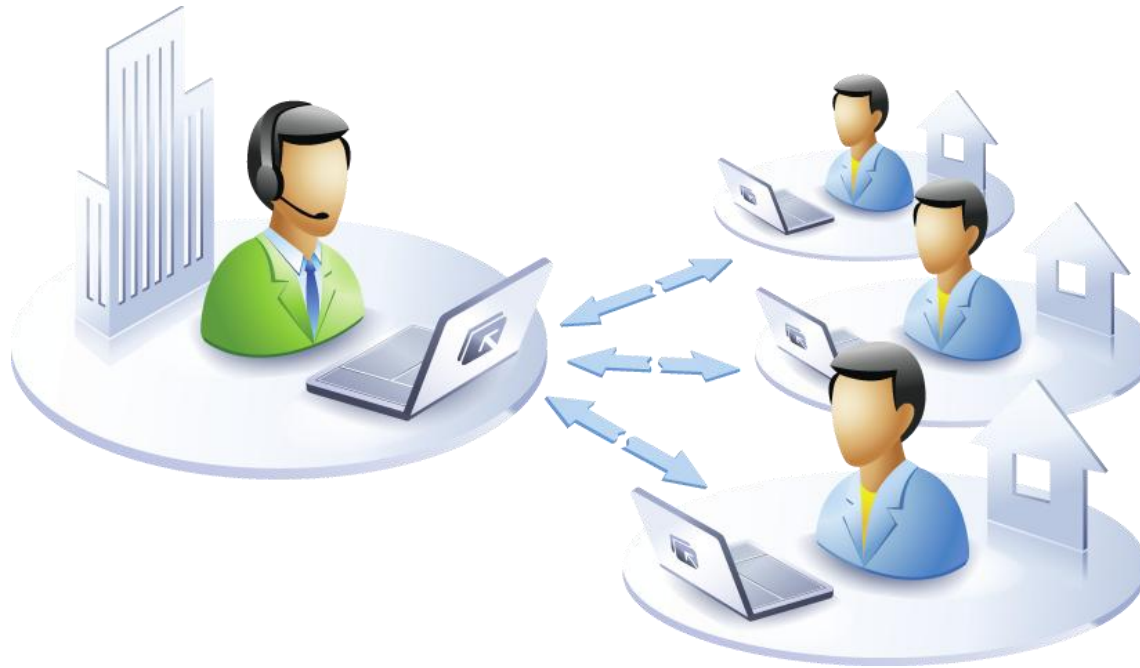
- Your system administrator doesn't waste time walking to offices.
- Employees don't waste time waiting for the administrator.
- One administrator can serve hundreds of PCs in different buildings.
- The admin can even configure the servers remotely.
- Radmin Viewer (the host module) is free of charge.

## Working Remotely



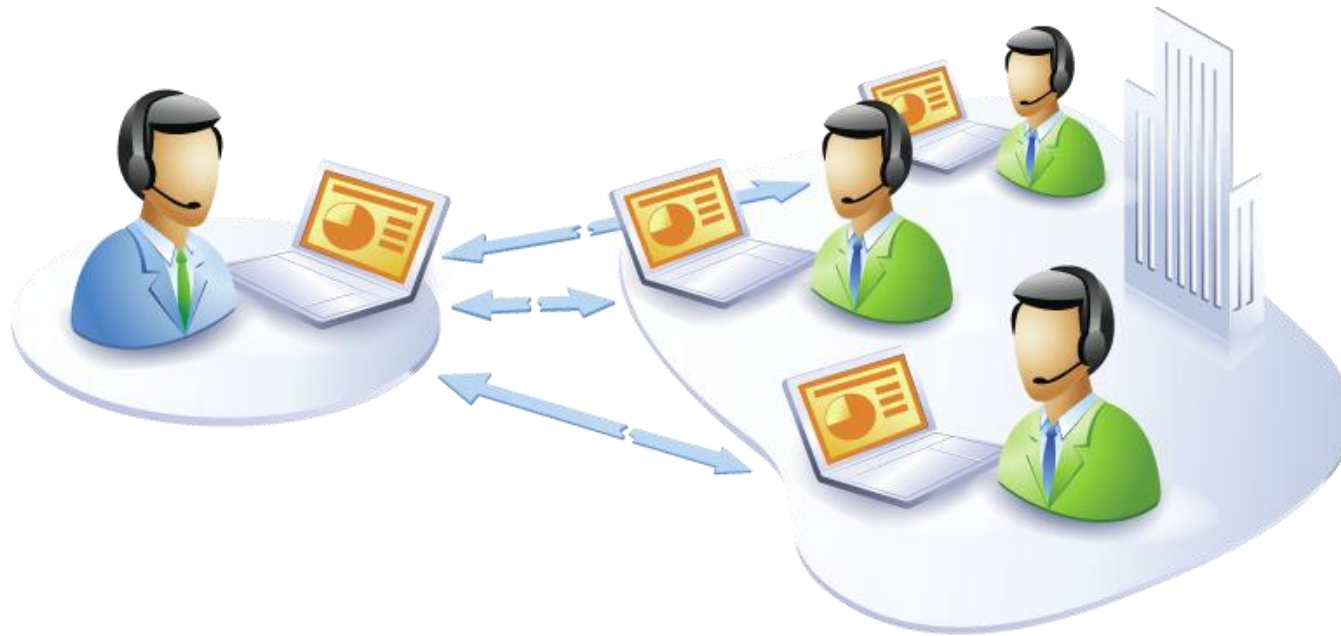
- Aspiring employees can work overtime from home.
- Employees can access their office PCs when on business trips.
- Important corporate information remains securely within the company.
- Remote employees take up zero space in the server room.
- Remote employees take up zero space in the office.
- Remote employees can work from *anywhere* in the world.

## Help Desk Services



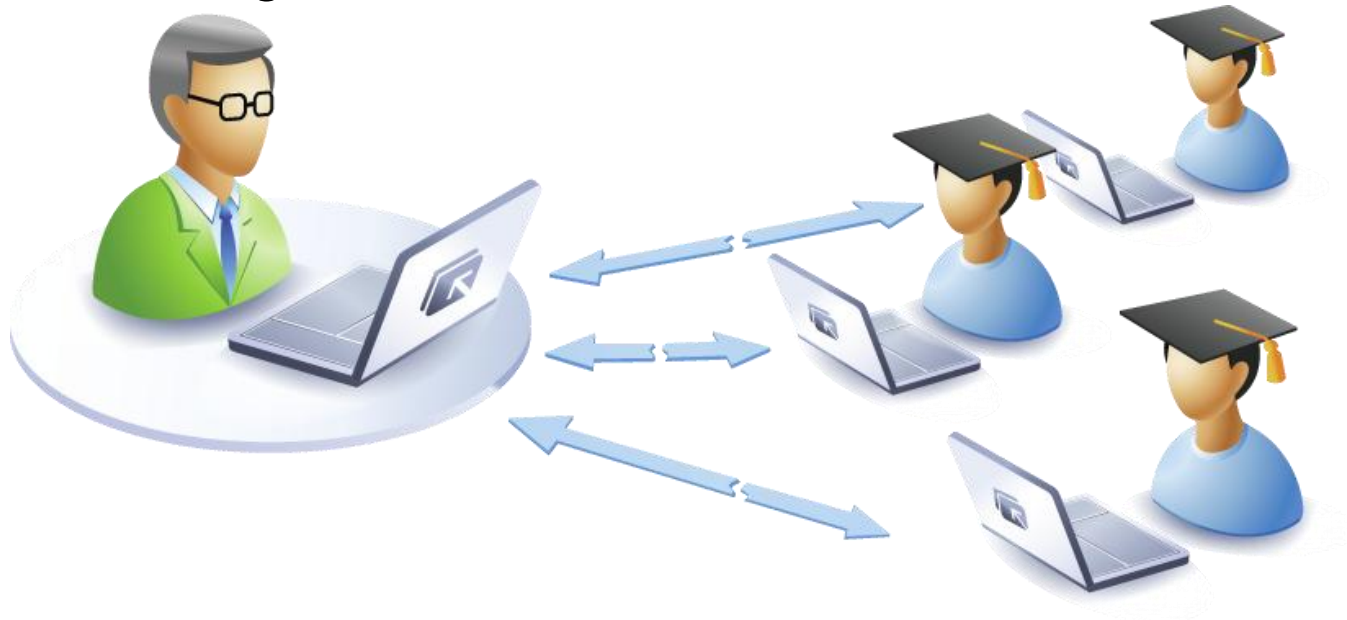
- No need to travel to customers to solve their problems.
- Customers can see and remain in control of the process.
- Software integrators can install and maintain complex products remotely.

## Online Conferences



- Train employees remotely.
- Demonstrate your company's products to customers and partners from all around the world at the same time.
- Save on travelling and phone conversations.

## Remote Training



- Students can be anywhere in the world.
- The professor can monitor students' activities from his desk.
- Students can help each other with tasks.
- Flexible settings save network traffic (much lower bandwidth).

## Innovative Intel® AMT Technology Support

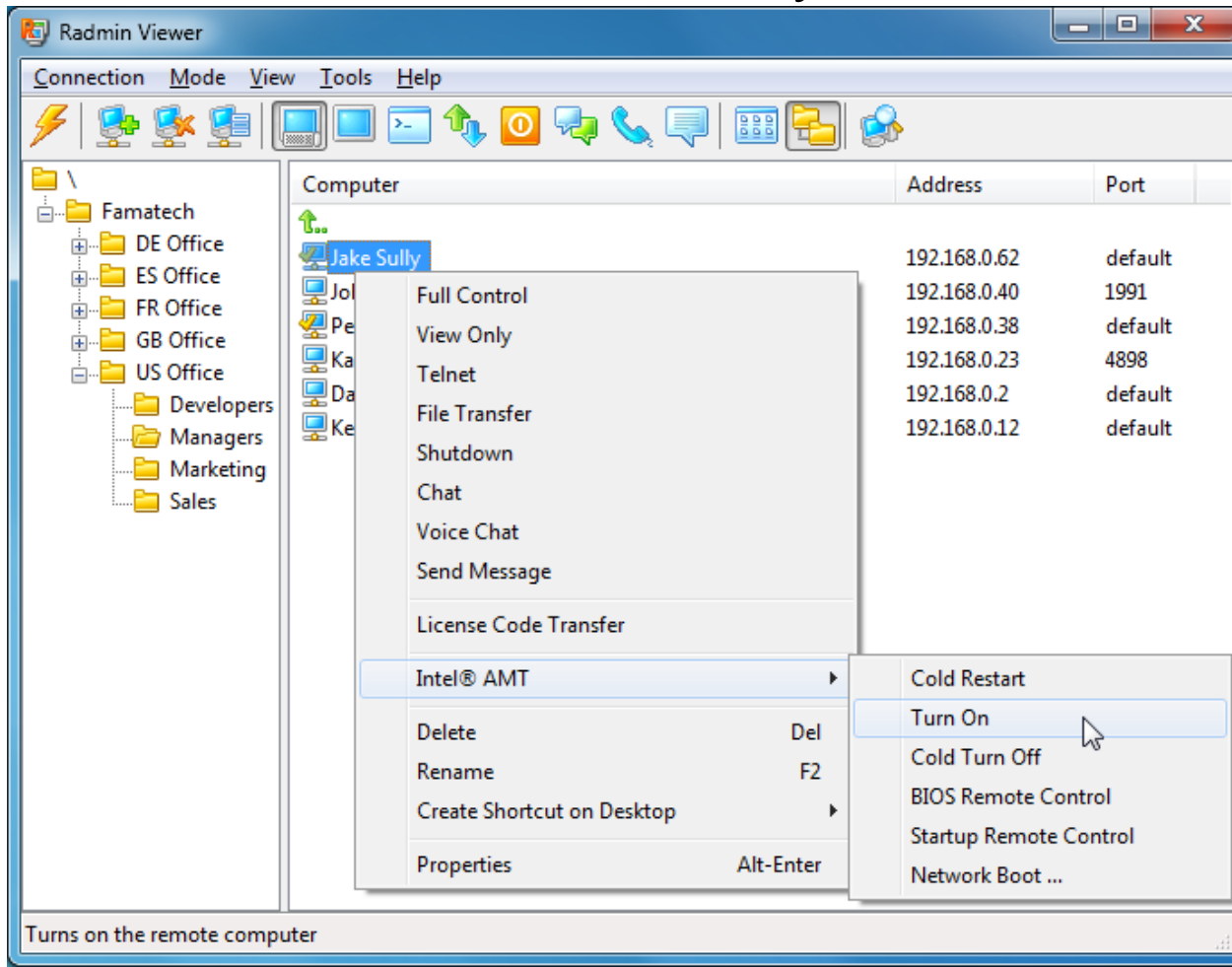


- Intel® AMT (Active Management Technology) is a remote control technology, which is integrated into the hardware component of the PC based on Intel® vPro™ platform.
- Intel® AMT enables you to administer a remote computer that is turned off, that has no operating system installed and even if its operating system is hung up.
- Connection to the remote computer is securely accomplished using Radmin Viewer 3.4, which is free of charge.
- Free Intel® AMT features using Radmin Viewer 3.4:
  - Cold restart
  - Turn on
  - Cold turn off
  - BIOS remote control
  - Startup remote control
  - Network boot.

## Advantages of Radmin + Intel® AMT

- Having remote control capability integrated right into the hardware, Intel® AMT technology is available for use on any computer running Windows, Linux, Mac OS *or any other operating system*.
- Intel® AMT functionality is available even if a computer :
  - Gives all its resources to a difficult process.
  - Is not responding or showing a BSOD (total crash).
  - Can't load an operating system or has a hard disk error.
- Radmin can turn on any AMT remote computer provided *only* that its power cord is plugged in. This is extremely helpful for companies in which the employees tend to switch their computers off. A system administrator can remotely turn on a computer using Intel® AMT, quickly connect to it using Radmin's Full Control mode and perform administrative tasks.
- With Intel® AMT technology Radmin can reboot a remote computer into its BIOS and work with the computer's BIOS settings remotely. This functionality enables remote troubleshooting of hardware problems, setting up RAID on motherboards, booting remote PCs in case of BIOS errors or even lack of a keyboard. Intel® AMT also provides access to the text mode of the boot process, which allows you to boot the OS in normal or safe mode.

## Free Intel® AMT Functionality in Radmin Viewer 3.4



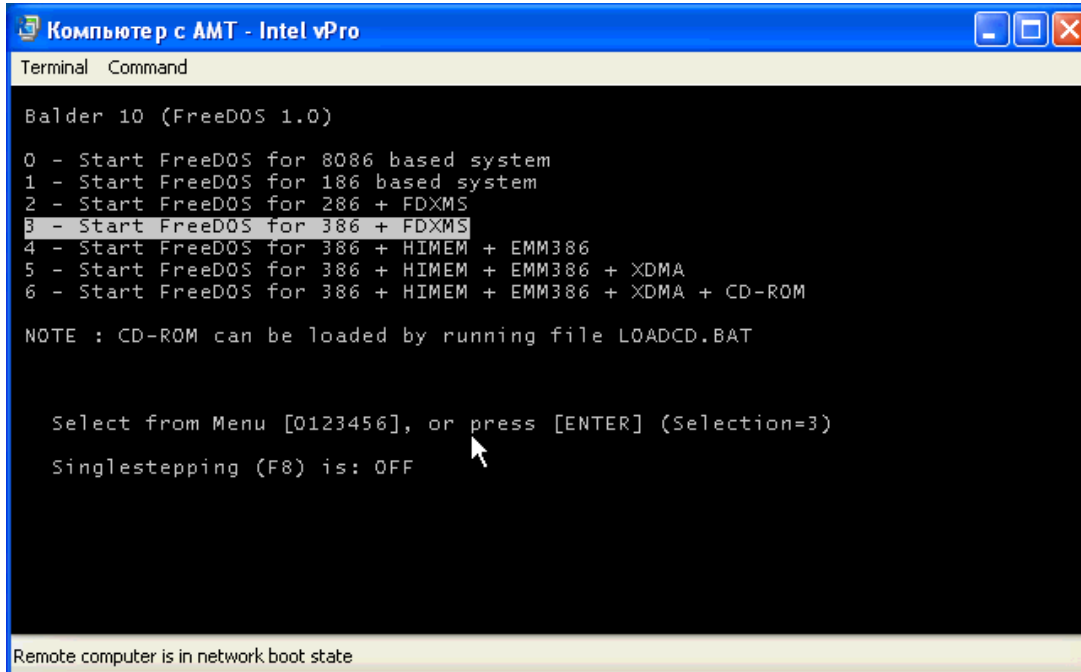
Radmin Viewer is a free program, therefore users of PCs supporting Intel® AMT technology can get its functionality for free! Radmin is brilliant sophisticated, efficient and inclusive. In fact, it is a perfect solution.

## Radmin + Intel® AMT: Remote Control of BIOS

```
amt pc - Intel vPro
Terminal Command
System Setup
Main Advanced Security Power Boot Intel? ME Exit
Boot Menu Type <Normal>
Boot Device Priority <CD/DVD-ROM Drive>
                  <Floppy Drive>
                  <Hard Disk Drive>
                  <Ethernet>
Hard Drive Order <MAXTOR STM380815>
CD/DVD-ROM Drive Order <Optiarc DVD RW A>
Removable Drive Order No Removable Drive
Boot to Optical Devices <Enable>
Boot to Removable Devices <Enable>
Boot to Network <Enable>
USB Boot <Enable>
ZIP Emulation Type <Floppy>
Boot USB Devices First <Disable>
USB Mass Storage <Auto>
Emulation Type
UEFI boot <Disable>
<>=Select Screen
↑↓=Select Item
Enter=Select Submenu
F9=Setup Defaults
F10=Save and Exit
Esc=Previous Page
Remote computer is restarted into BIOS
```

Intel® AMT enables you to control the BIOS of a remote PC as if you were sitting right in front of it. Your mouse movements and keyboard presses are transferred directly to the remote computer, and its BIOS is viewed on your monitor.

## Radmin + Intel® AMT: Remote Boot From a Local Computer



```
Компьютер с AMT - Intel vPro
Terminal Command

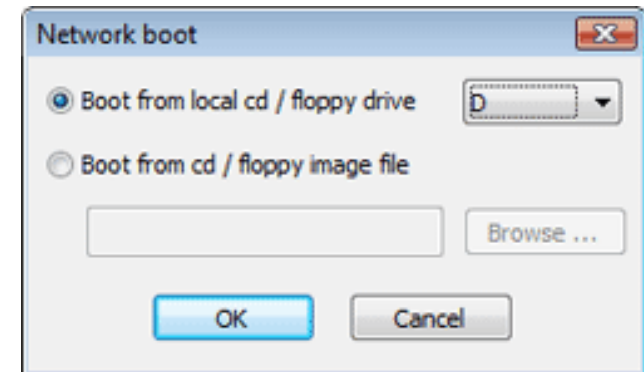
Balder 10 (FreeDOS 1.0)

0 - Start FreeDOS for 8086 based system
1 - Start FreeDOS for 186 based system
2 - Start FreeDOS for 286 + FDXMS
3 - Start FreeDOS for 386 + FDXMS
4 - Start FreeDOS for 386 + HIMEM + EMM386
5 - Start FreeDOS for 386 + HIMEM + EMM386 + XDMA
6 - Start FreeDOS for 386 + HIMEM + EMM386 + XDMA + CD-ROM

NOTE : CD-ROM can be loaded by running file LOADCD.BAT

Select from Menu [0123456], or press [ENTER] (Selection=3)
Singlestepping (F8) is: OFF

Remote computer is in network boot state
```



This option enables you to boot a remote PC using your local computer's CD-ROM or floppy drive or ISO image file.

Using this option you can run Microsoft Memory Diagnostics on the remote computer, boot that computer from your own CD-ROM and even install an operating system remotely.

## Netbook + Radmin = Your office anywhere in the world



### Advantages of using a netbook for remote access:

- *No risk of confidential data loss* (in case of theft, physical damage of the netbook or at international borders).
- Radmin Viewer doesn't need a lot of resources and works quickly even on the slowest netbook.
- Your company saves money by providing low-cost netbooks to your employees.

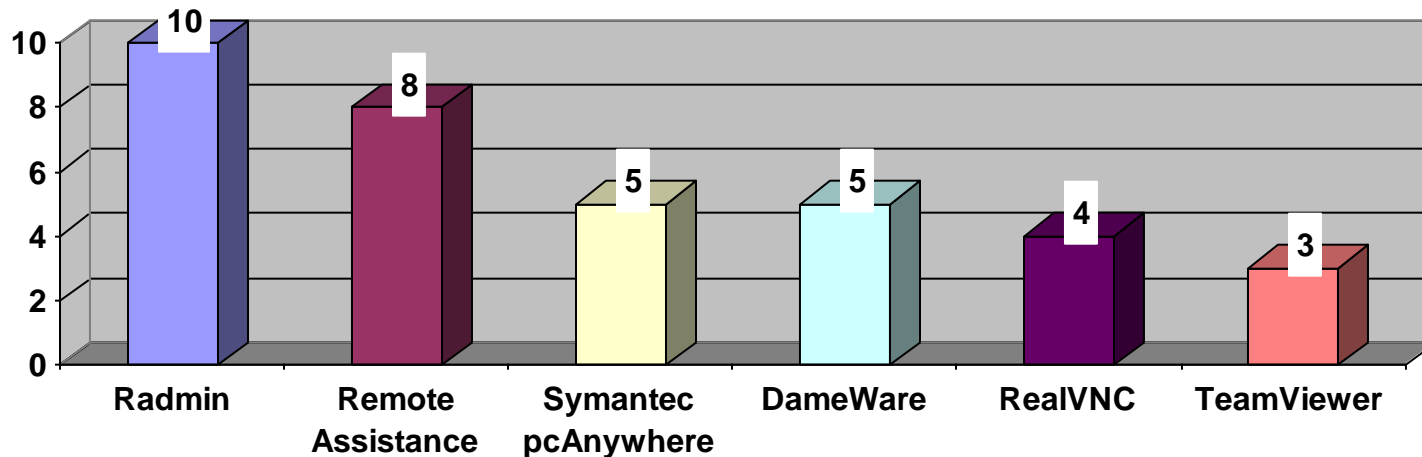
## Why Radmin?

- Radmin is widely acknowledged as the best remote software in: security, speed of work and ease of use.
- Radmin provides the best value for your money due its optimal feature set and flexible pricing policies.
- Radmin has a comfortable, convenient user interface and is easy on system resources.
- Radmin is translated into 27 languages and presented by more than 5000 independent partners worldwide.
- All users receive free technical support.
- Non-profit and educational institutions receive a 33% discount for every type of license.
- During its 10 years of being on the market Radmin has never been hacked nor decompiled and data transferred by Radmin has never been tapped.

## Comparison with Competitors in Speed and Image Quality

Speed of work and image quality are crucial for a comfortable remote working session. Award-winning Radmin is the undisputed champion.

Testing results (speed / image quality)



## Advanced Technologies of Radmin

- **Highest speed of work:**  
Radmin is *the fastest remote control software available on the market*. Its new DirectScreenTransfer™ technology uses a video hook kernel mode driver to boost the capture rate to hundreds of screen updates per second. Its special low-bandwidth optimizations let you control a remote computer comfortably even on slow dial-up modem and GPRS connections.
- **Full compatibility with Windows 7/Vista/XP/2008/2003/2000 (32/64-bit):**  
Radmin 3.4 fully supports Windows 7/Vista/XP/2008/2003/2000 (32-bit and 64-bit), including User Account Control and Fast User Switching. Radmin is the only remote control software authorized with a digital signature by Microsoft WHQL.
- **Intelligent compression algorithm:**  
Radmin automatically adjusts the compression level for bandwidth and CPU usage, providing a precise correlation between CPU load and the width of the data link.
- **Remote installation, configuration and update:**  
With the free Radmin Deployment Package software (available on [www.radmin.com](http://www.radmin.com)) network administrator can quickly and easily perform a remote installation of Radmin on thousands of computers.

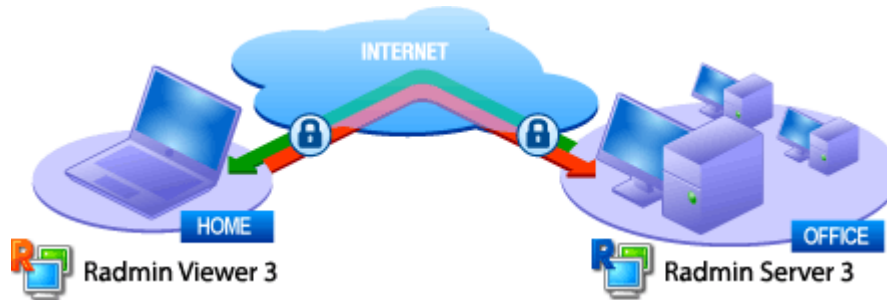
## Radmin Features:

- Connection to a remote computer in different modes: Full Access, View Only, Telnet, File Sharing, reboot/shutdown, text and voice chats, as well as sending instant text messages;
- Support for high display resolutions and multiple monitors;
- Support for multiple simultaneous connections to one remote computer;
- Ability to connect to several remote computers simultaneously;
- Support for fast user sessions switching in Windows 7/Vista/XP;
- Change of color depth from black and white (when using low-bandwidth connection) to full-color;
- Radmin Viewer 3 is compatible with Wine (remote access to machines running Linux);
- Two-way clipboard transfer with Unicode support;
- Built-in scanner for running Radmin Servers.

## Radmin Security

- Advanced 256-bit AES strong encryption of all data streams (including screen images, cursor movements and keyboard signals) in all connection modes which excludes the possibility of any confidential information leak.
- Radmin supports user level security with NTLMv2 and includes Kerberos support so you can limit remote access to specific users or user groups including users of the local computer, primary domains, trusted domains or Active Directory.
- When using Radmin security you can set up different permissions for Radmin users. Authentication of users and session key setup employs a modified Diffie-Hellman exchange with 2048 bit key size.
- Radmin has an IP filter table that lets you restrict remote access to specific IP addresses and networks.
- Radmin Server starts only as a service and doesn't start as an application on Windows platform, which improves security.
- The opportunity to request a connection to a remote computer to protect against unauthorized access.
- Smart protection from password guessing includes a time delay activation and blocking of suspicious IP addresses.
- Radmin includes self-testing procedures that protect its code from changes.
- Radmin Server actively protects its settings that are stored in Windows Registry. Access to this Registry branch has only a user with administrator privileges.
- Radmin records all its actions and events to a log file.

## How It Works



### Radmin 3 consists of two modules:

#### Radmin Viewer

Radmin Viewer is installed on the **local** computer, which you want to use to access your remote computer.

#### Radmin Server

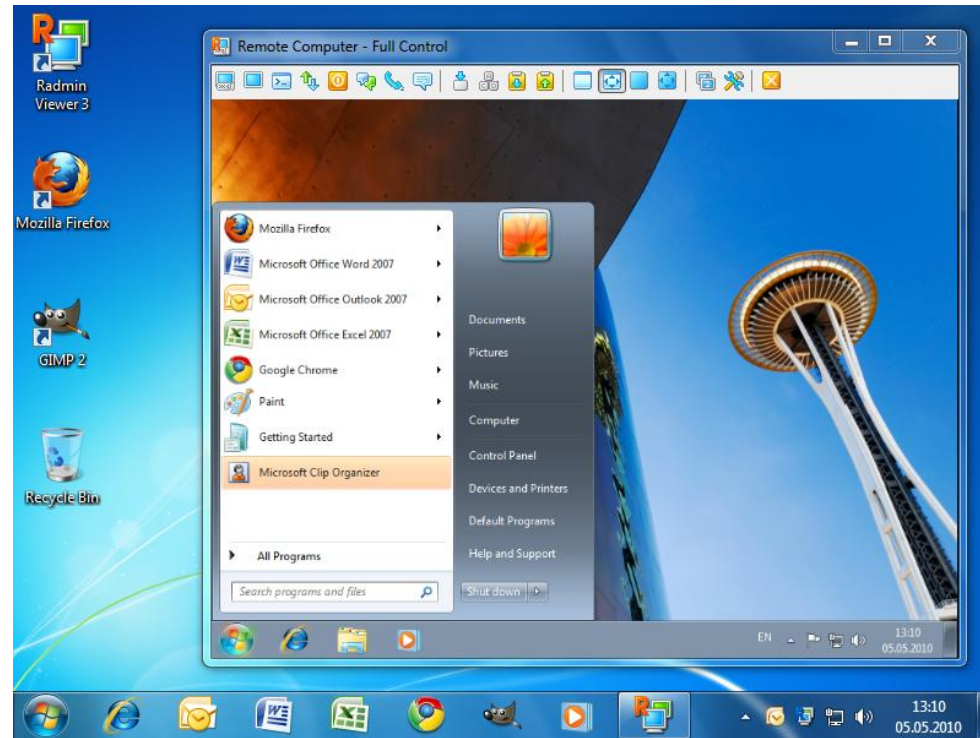
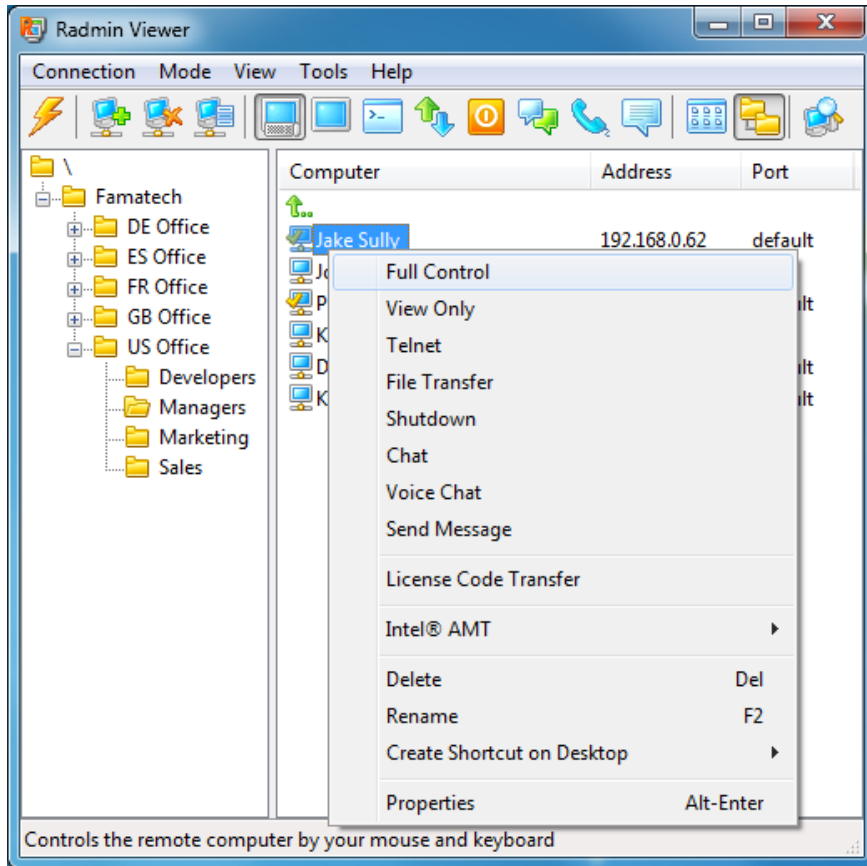
Radmin Server is installed on the **remote** computer, which you want to access from your local one.

**Access to Radmin Server is possible both on a local network or via the Internet from anywhere in the world.**

# Convenient and User-Friendly Interface

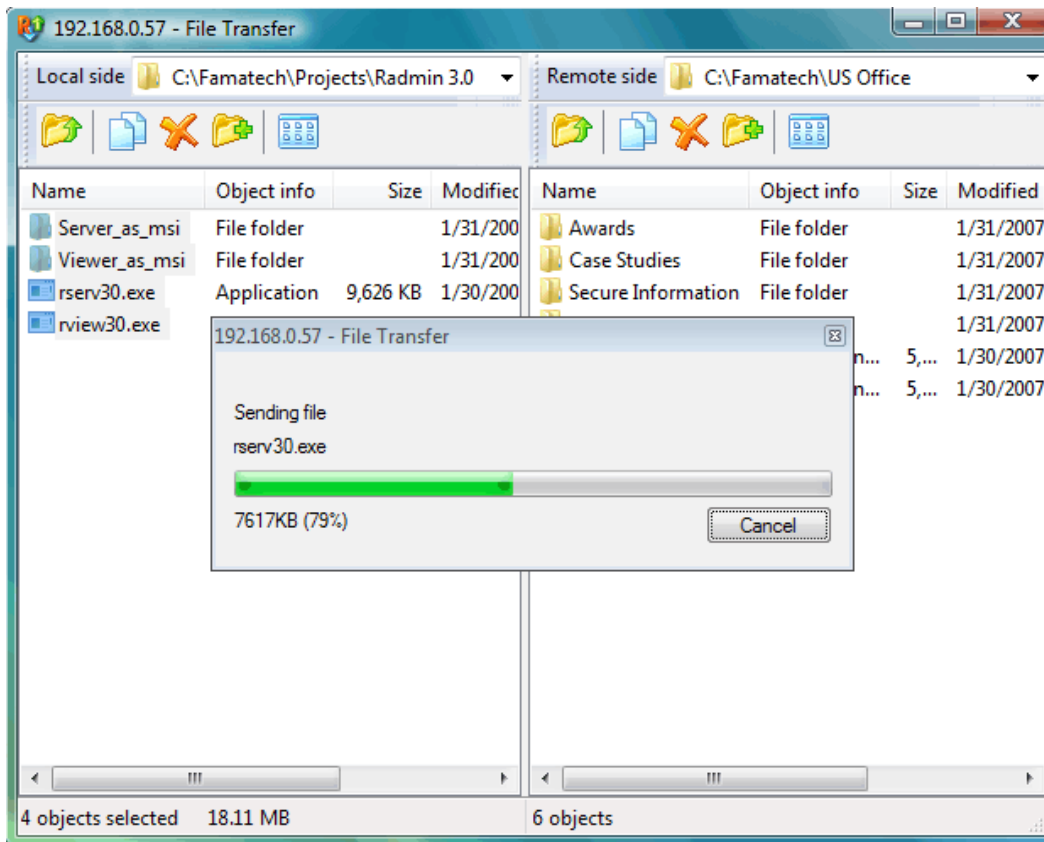
Main window - Address Book

Managing a remote computer

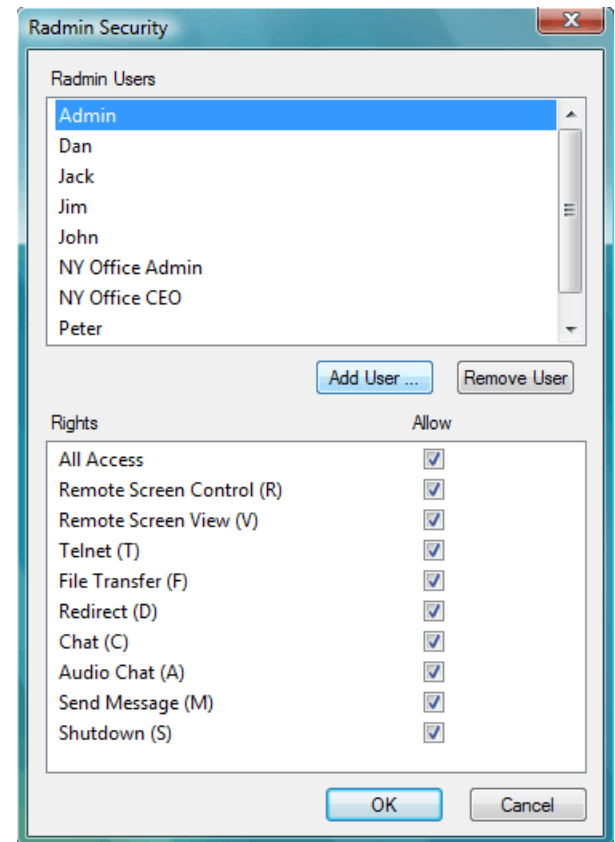


# Convenient and User-Friendly Interface

Secure file transfer has an Explorer-like interface

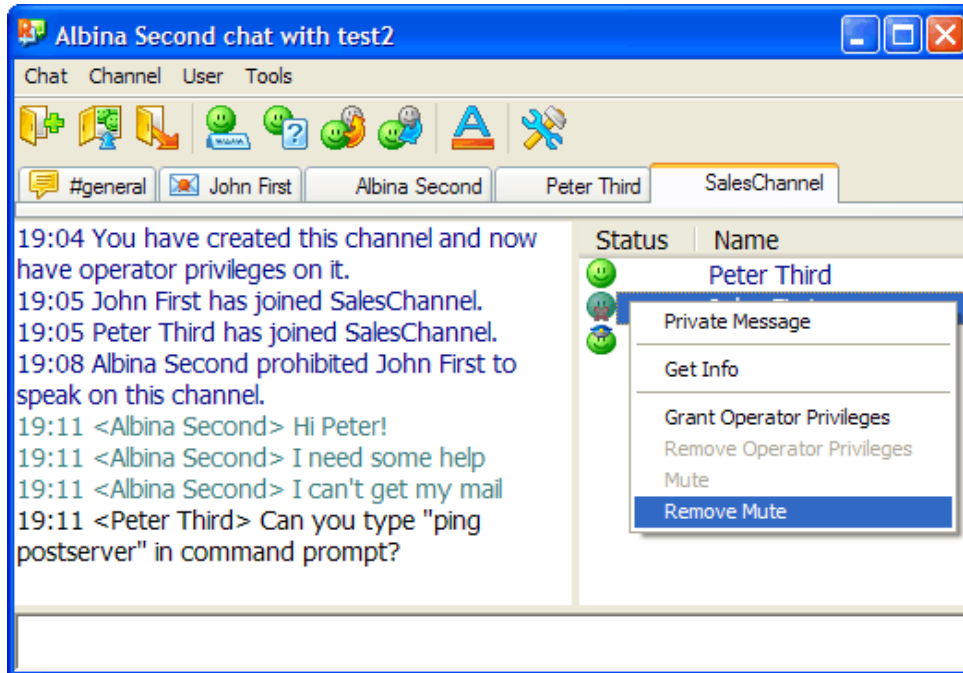


Security system:

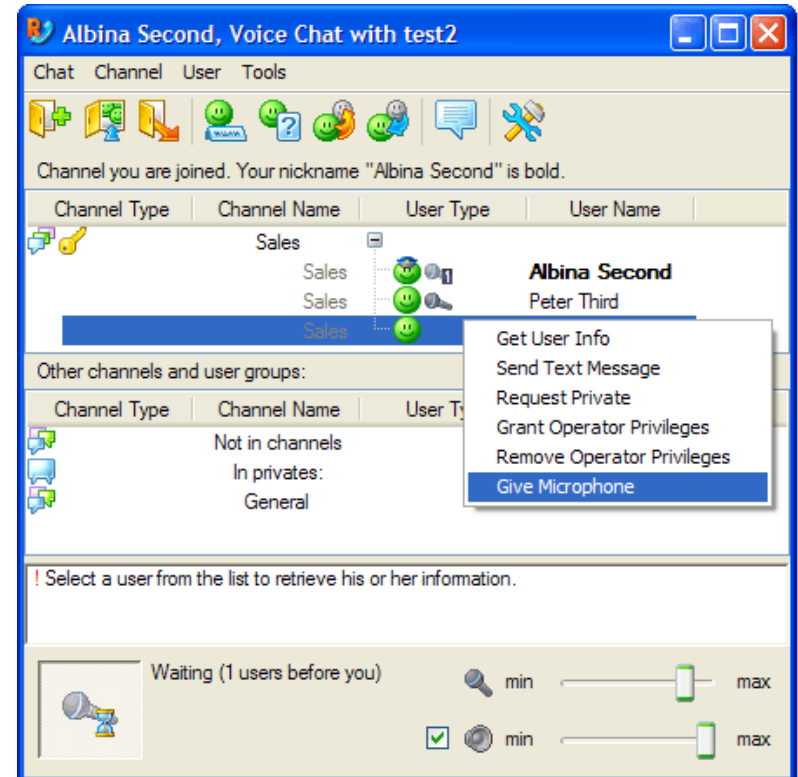


# Convenient and User-Friendly Interface

Multi-user text chat



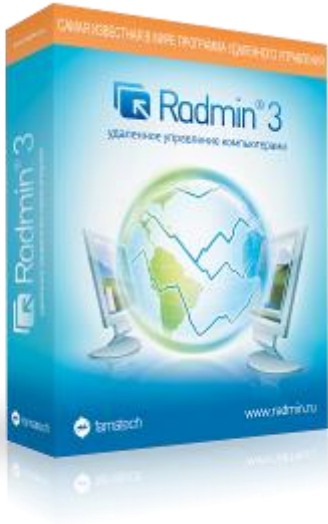
Multi-user voice chat



## Why Radmin?

- Radmin is popular all over the world and is used by 40% of Fortune 500 companies.
- Its flexible licensing policy allows coverage of a large number of computers at minimal cost.
- Radmin has a lifetime license (no monthly fees).
- It's easy to deploy Radmin on a large network due to the free utility Radmin Deployment Package for remote installation and setup.
- Radmin has over 12 million users worldwide.
- Radmin has 11 years of success on the remote control software market.

## Radmin Licensing Policy



### Radmin has a very reasonable price:

- Radmin Server (installed on a remote computer): \$49 USD for 1 PC.
- Radmin Viewer: free.
- Technical support: free.
- Intel® AMT support: free.

### Discounts for large volume orders:

- Flexible licensing policy for large companies: \$22 USD or less per PC.

### Help desk licensing:

- Special prices for companies providing technical support services: \$33 USD or less per PC.

### Educational licensing:

- Non-profit educational institutions receive a **33%** discount on every type of license.